



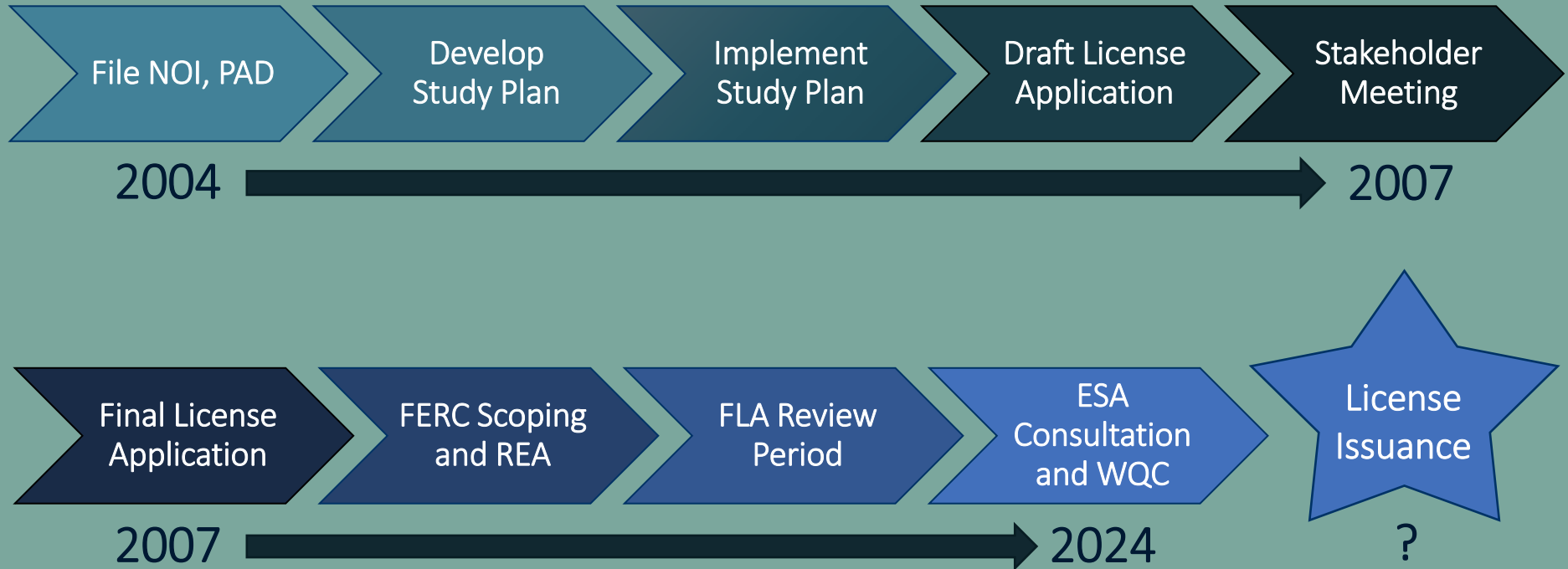
South Feather Power Project Relicensing and License Implementation Planning



South Feather Water & Power

Stillwater Sciences

FERC's Traditional Relicensing Process



NOI = Notice of Intent to Relicense

PAD = Pre-Application Document

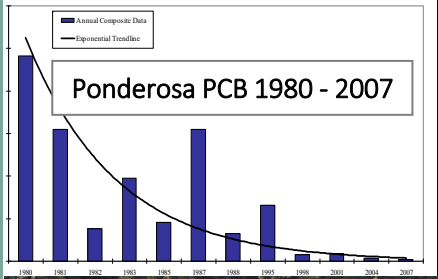
REA = Ready for Environmental Analysis

FLA = Final License Application

ESA = Endangered Species Act

WQC = Water Quality Certificate

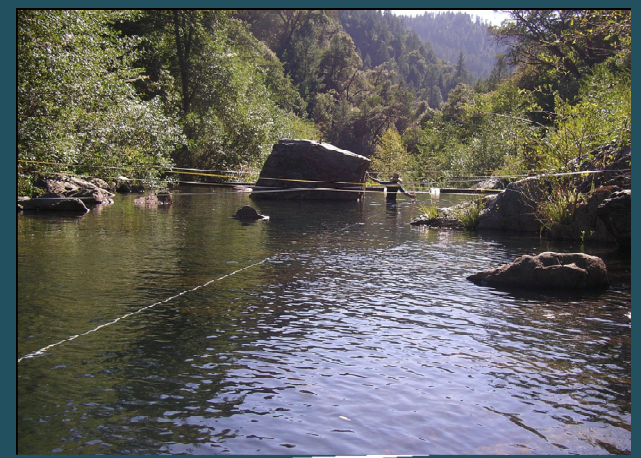
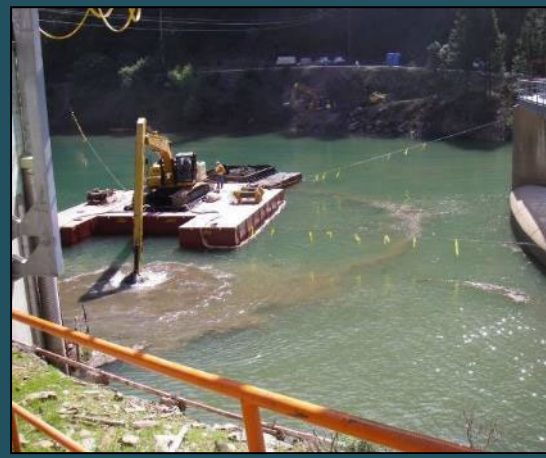
Previous License Compliance Monitoring



- Fish Population Monitoring Program
- Ponderosa Reservoir PCB Monitoring
- Miners Canal Road Repair Water Quality Monitoring
- Benthic Macroinvertebrates
- Amphibians and Reptiles
- Geomorphology
- Water Quality and Mercury



Slate Creek and Forbestown Dredging and Sediment Pass-Through Monitoring



Slate Creek Diversion (top) and Forbestown Diversion (bottom)



Hydro Relicensing Studies



- Fish Populations & Instream Flow
- Benthic Macroinvertebrates
- Amphibians and Reptiles
- Invasive Weeds / Special-Status Plants
- Riparian Encroachment
- Water Temperature / Water Quality
- Geomorphology
- Miners Ranch Canal / Wildlife



Current Efforts

Supporting the USFWS Section 7 Consultation regarding foothill yellow-legged frog interim ramping rates downstream of project dams

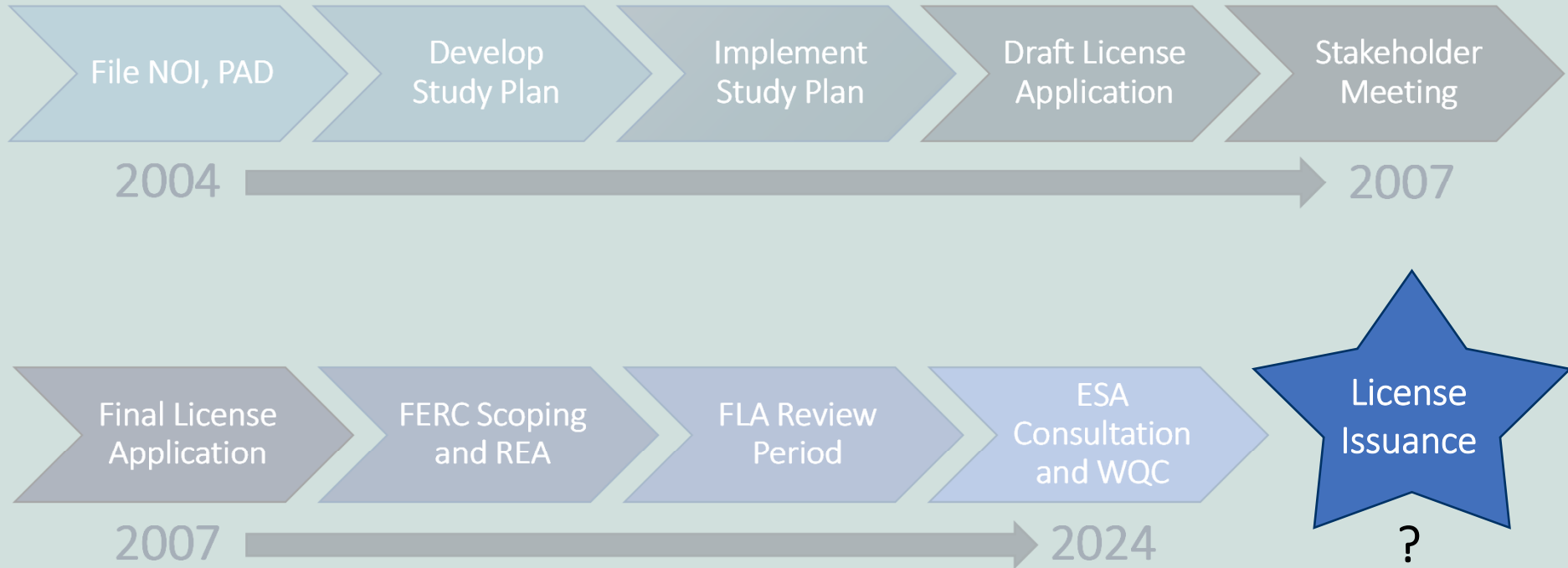


Compliance Under Existing License

- Slate Creek Sediment



FERC's Traditional Relicensing Process



NOI = Notice of Intent to Relicense

PAD = Pre-Application Document

REA = Ready for Environmental Analysis

FLA = Final License Application

ESA = Endangered Species Act

WQC = Water Quality Control

New License Compliance: Aquatic Monitoring



- Aquatic Biological Monitoring
 - Fish
 - Benthic Macroinvertebrates
 - Amphibians
 - Riparian Vegetation and Treatment
 - Water Temperature
- Develop Fish and Aquatic Species Stream Habitat Management Plan
- Develop Fish Entrainment Management Plan



New License Compliance: Terrestrial Monitoring



- Integrated Vegetation Management Plan
- Develop Bat Management Plan
- Maintain wildlife protection devices along Miners Ranch Conduit



Other Compliance Items in FERC EIS

- Conduct Annual Employee Awareness Training
- Annual Consultation with Forest Service
- Construction-related (non-routine) erosion control plans
- Prepare a Biological Evaluation before work on Forest Service Lands
- Maintain minimum instream flows by water-year type
 - **Develop Long-term Ramping Plan**
 - Channel maintenance flows
 - Water Resources Management for Recreation
- Return LWD below Little Grass Valley and Lost Creek dams

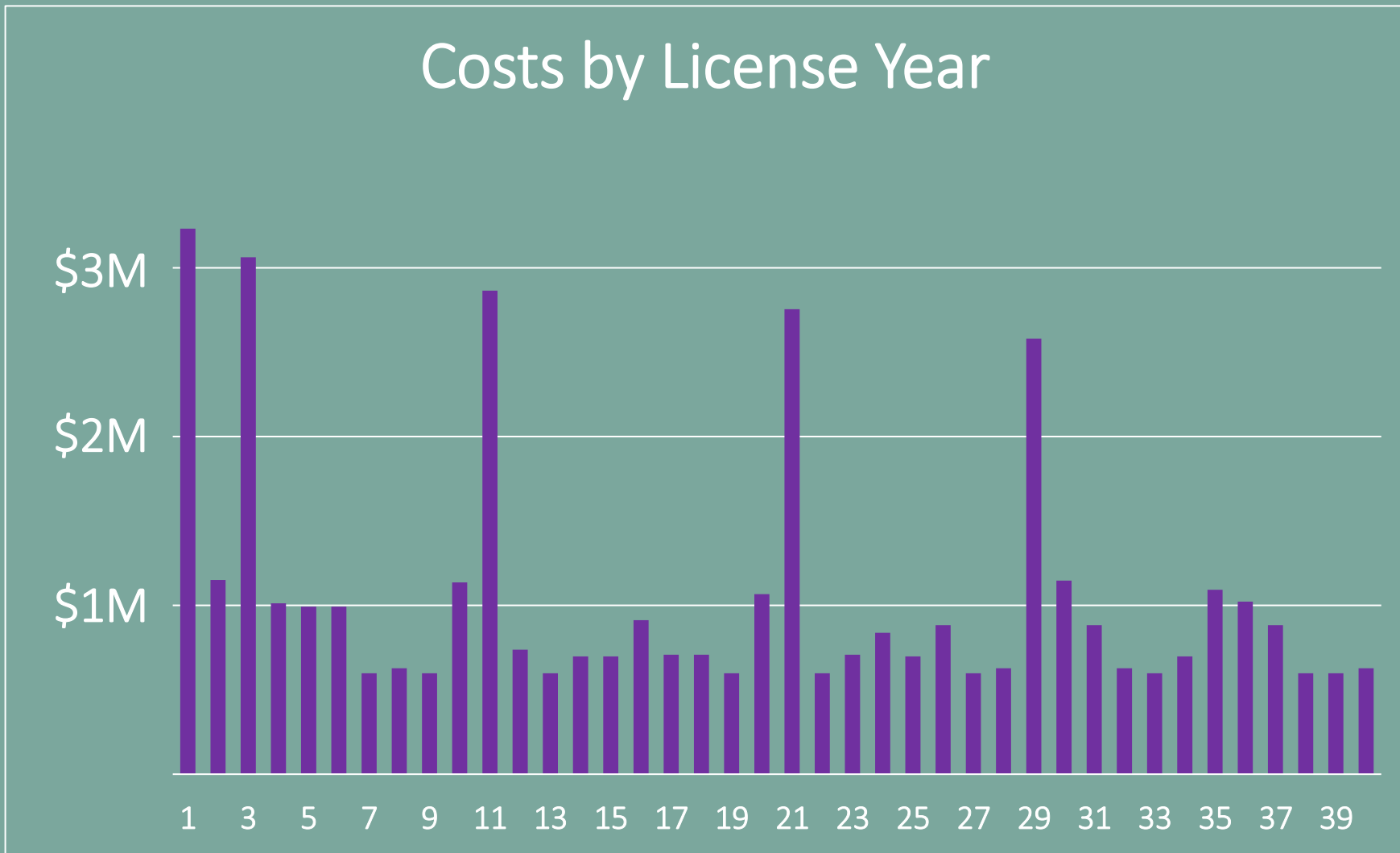


Other Compliance Items in FERC EIS

- Slate Creek Sediment Pass-Through
- **Transportation System Management Plan**
- Recreation: construct/maintain trails
- Fire Prevention, Response, and Investigation
- Develop Gaging Plan
- Heritage Properties Management
- Hazardous Substances Management
- Visual Resources
- Update Bald Eagle Plan



Costs by License Year



Approximate timing of implementation costs by license year
(\$ 2024)



- Update implementation schedule and cost estimates, based on an anticipated License in 2026/2027
- Review draft conditions to identify any additional compliance issues and prepare for new license implementation
- Establish review teams and prepare license review schedule
- Decide on License acceptance or request for rehearing
- Ensure necessary external subject matter expert support is ready

Preparation for License Issuance





Thank You

